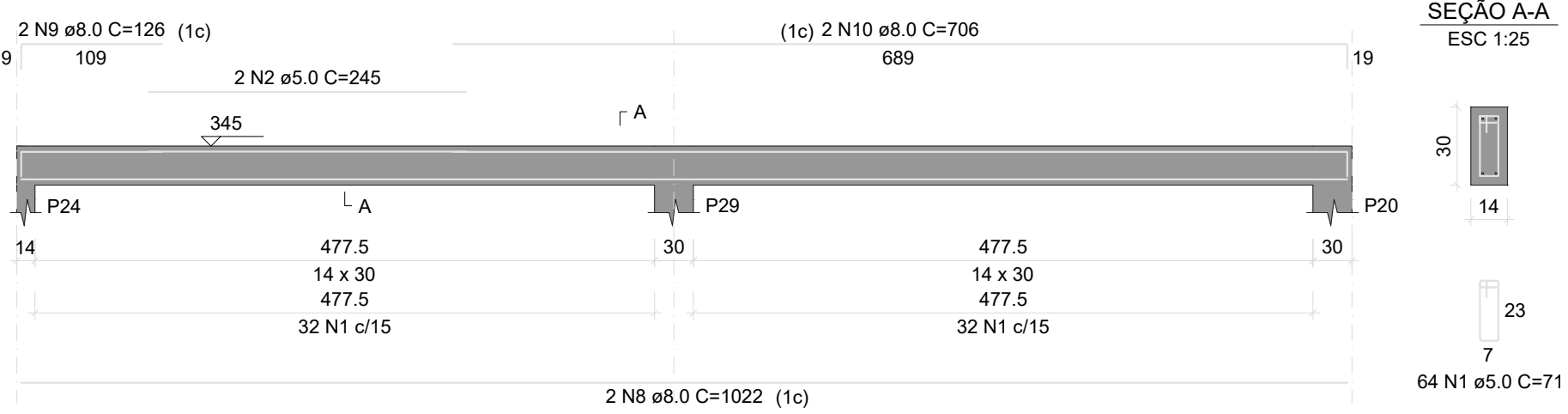
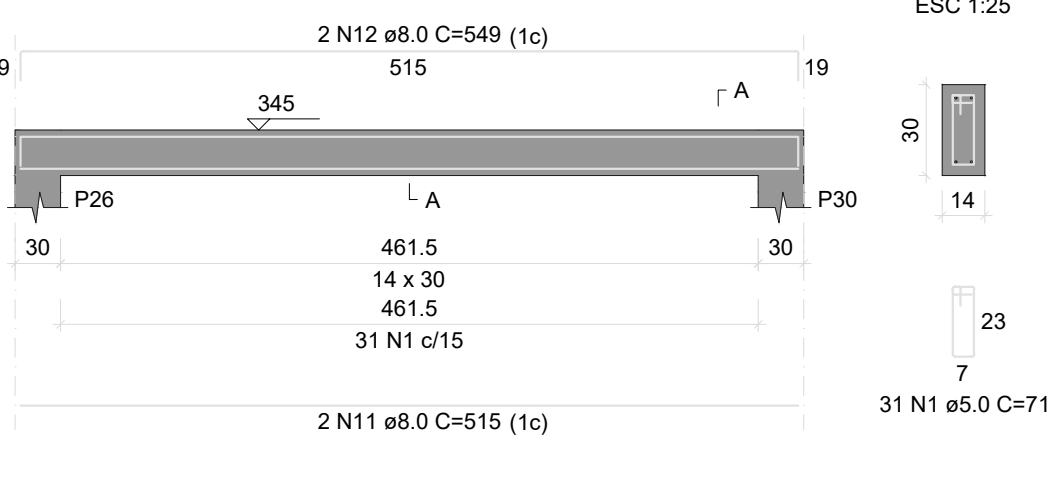


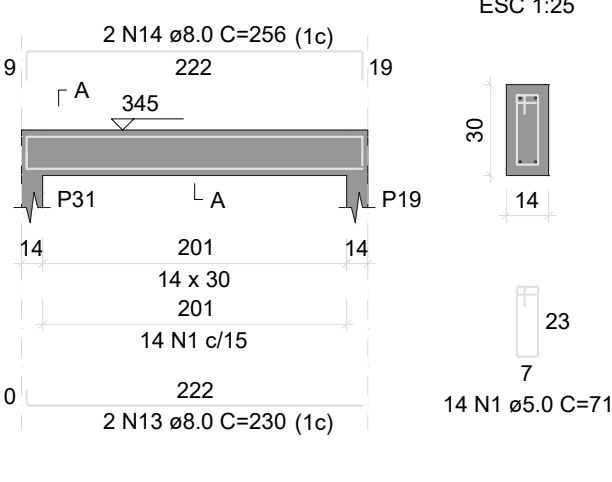
VS19



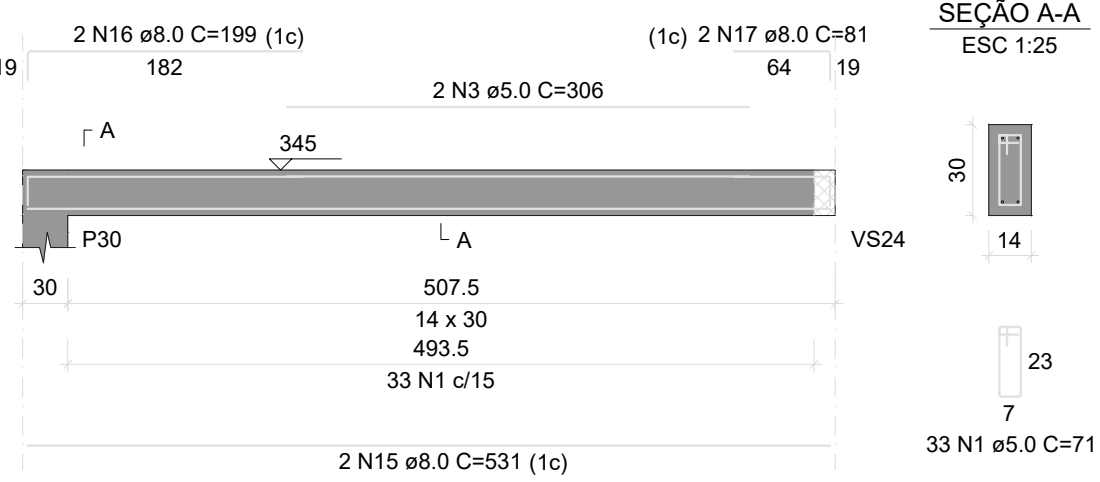
VS21



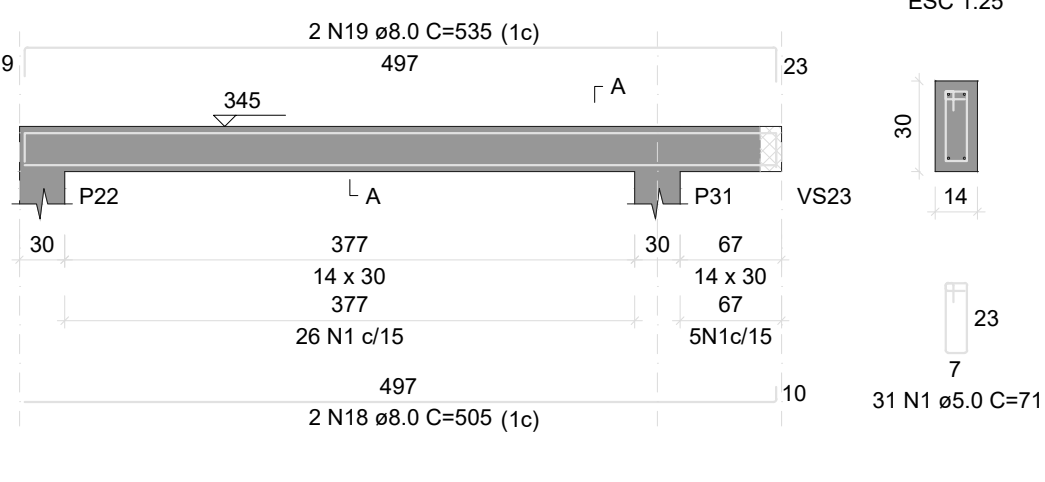
VS22



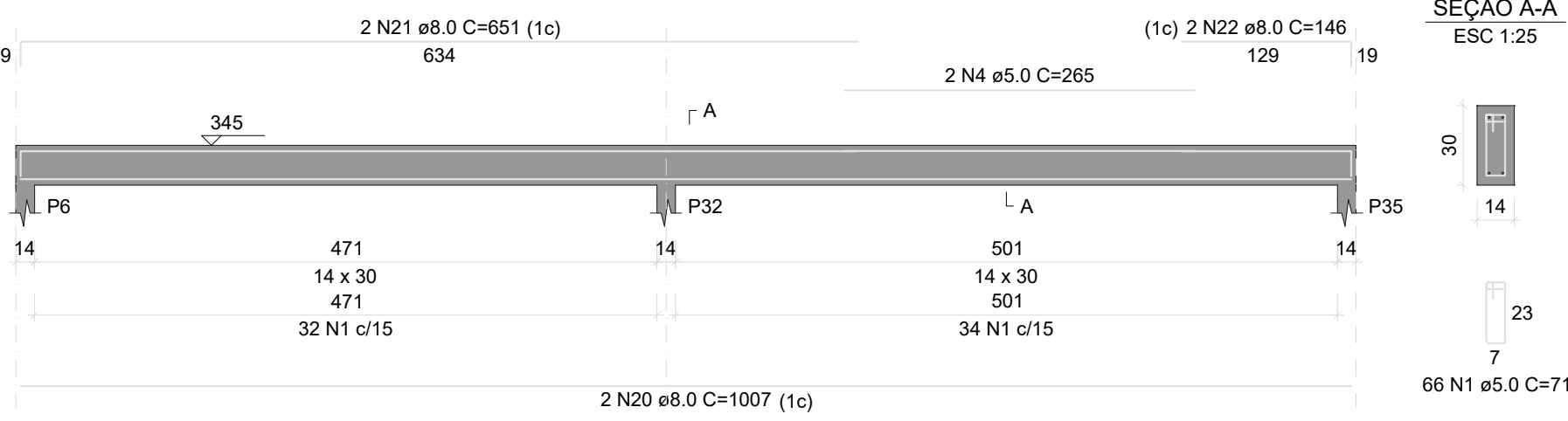
VS23



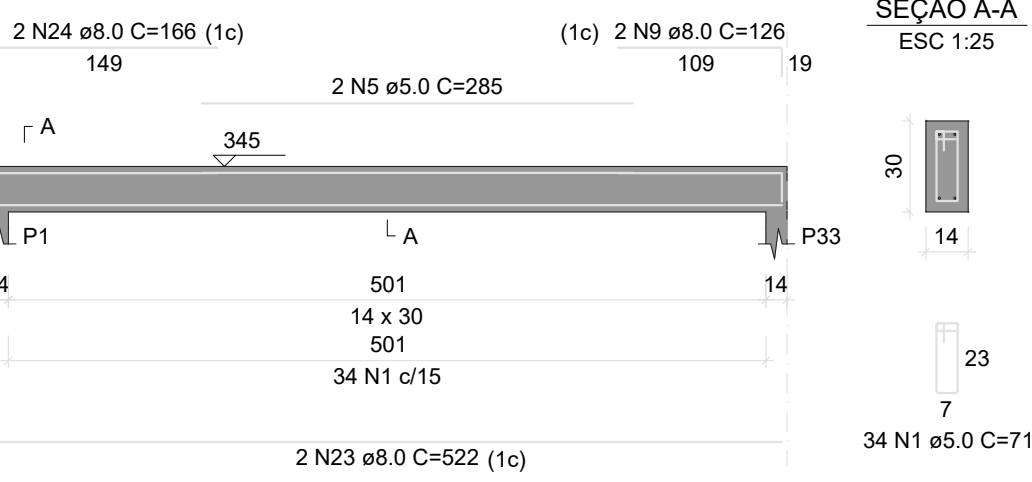
VS24



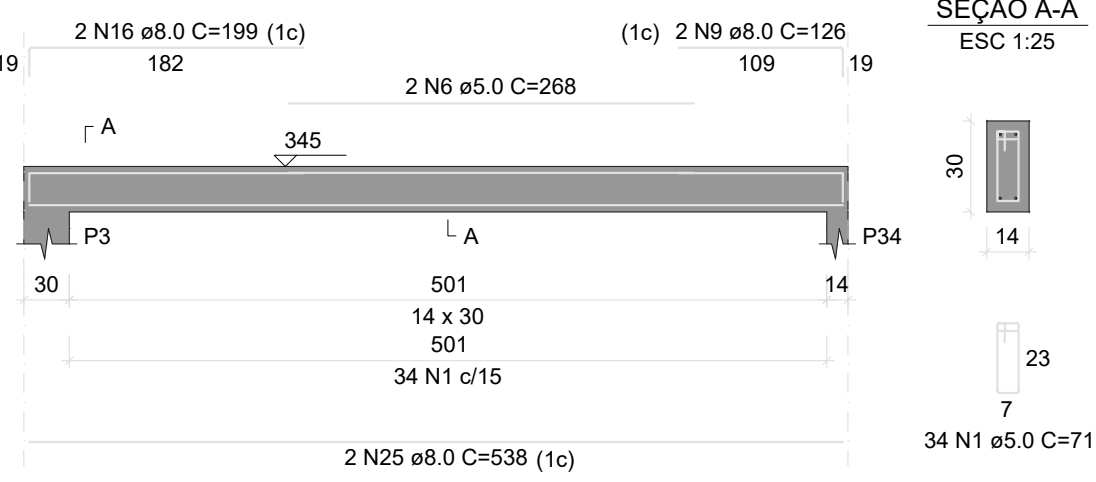
VS25



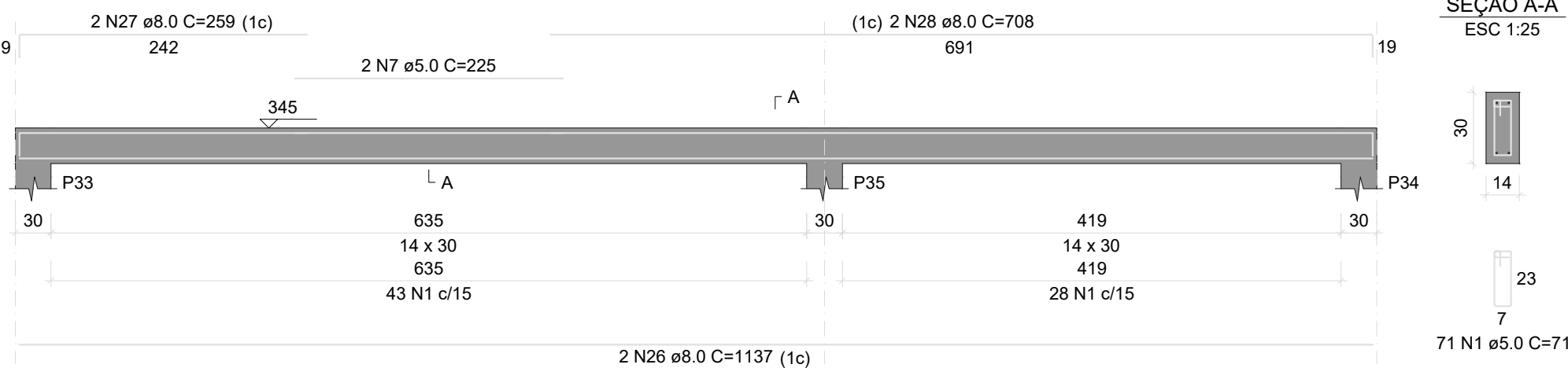
VS26



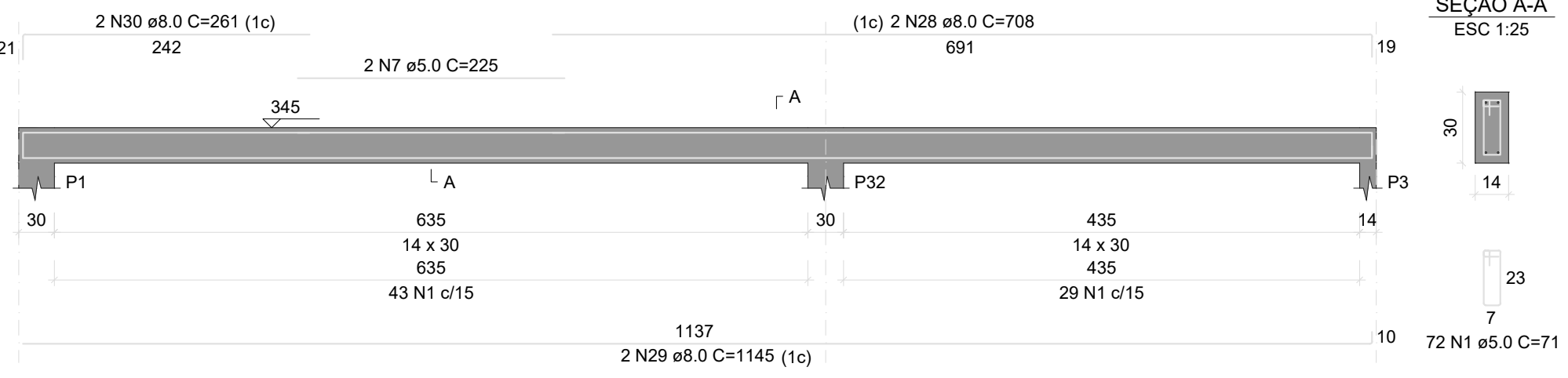
VS27



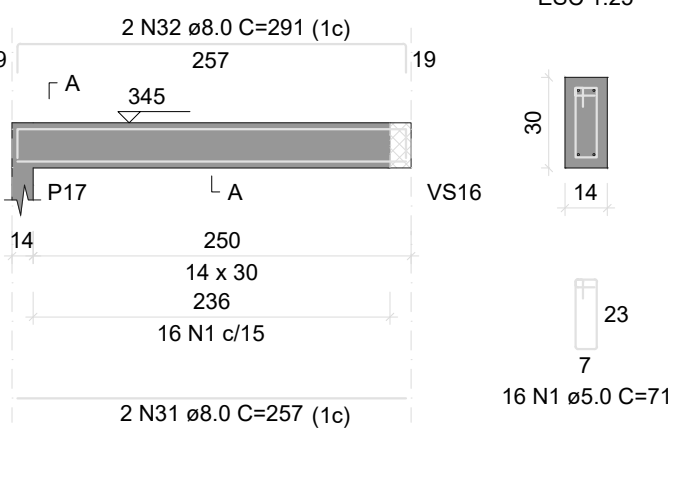
VS28



VS29



VS30



RELAÇÃO DO AÇO

AÇO	N	DIAM (mm)	QUANT	C UNIT (cm)	C TOTAL (cm)
CA60	1	5.0	456	71	33986
	2	5.0	245	245	490
	3	5.0	306	306	612
	4	5.0	265	265	530
	5	5.0	285	285	570
	6	5.0	268	268	536
	7	5.0	225	225	900
	8	8.0	1022	2044	2044
	9	8.0	126	756	756
	10	8.0	706	1412	1412
	11	8.0	515	1030	1030
	12	8.0	549	1098	1098
	13	8.0	230	460	460
	14	8.0	256	512	512
	15	8.0	531	1062	1062
	16	8.0	199	796	796
	17	8.0	81	162	162
	18	8.0	505	1010	1010
	19	8.0	535	1070	1070
	20	8.0	1007	2014	2014
	21	8.0	651	1302	1302
	22	8.0	146	292	292
	23	8.0	522	1044	1044
	24	8.0	166	332	332
	25	8.0	535	1075	1075
	26	8.0	1137	2274	2274
	27	8.0	259	518	518
	28	8.0	708	2832	2832
	29	8.0	1145	2290	2290
	30	8.0	261	522	522
	31	8.0	257	514	514
	32	8.0	291	582	582

RESUMO DO AÇO


AÇO	DIAM (mm)	C TOTAL (m)	PESO + 10% (kg)
CA50	8.0	270	117.2
CA60	5.0	367.2	62.3
PESO TOTAL (kg)			
CA50		117.2	
CA60		62.3	

Volume de concreto (C-25) = 2.90 m³
Área de forma = 55.21 m²

PROJETO ESTRUTURAL


OBRA: CONSTRUÇÃO DA SECRETARIA DE EDUCAÇÃO
PROPRIETÁRIO: FUNDO MUNICIPAL DE EDUCAÇÃO DE BERNARDO SAYÃO
LOCAL: AV. TERCEIRA, CENTRO, BERNARDO SAYÃO - TO

PROPRIETARIO



FUNDO MUNICIPAL DE EDUCAÇÃO DE BERNARDO SAYÃO

ENG. CIVIL - LEONARDO SOUSA AMORIM
CREA 26151/2705-5/05-SP



ESCALA	INDICADA	DATA	JUNHO/2022	CONFERIDO
ÁREAS: 408,18 m²		CONTEUDO ESTRUTUTAL: VIGA COBERTURA-02		FOLHA A1 - 09
				DESENHO LEONARDO S. AMORIM (R) 99278-6334